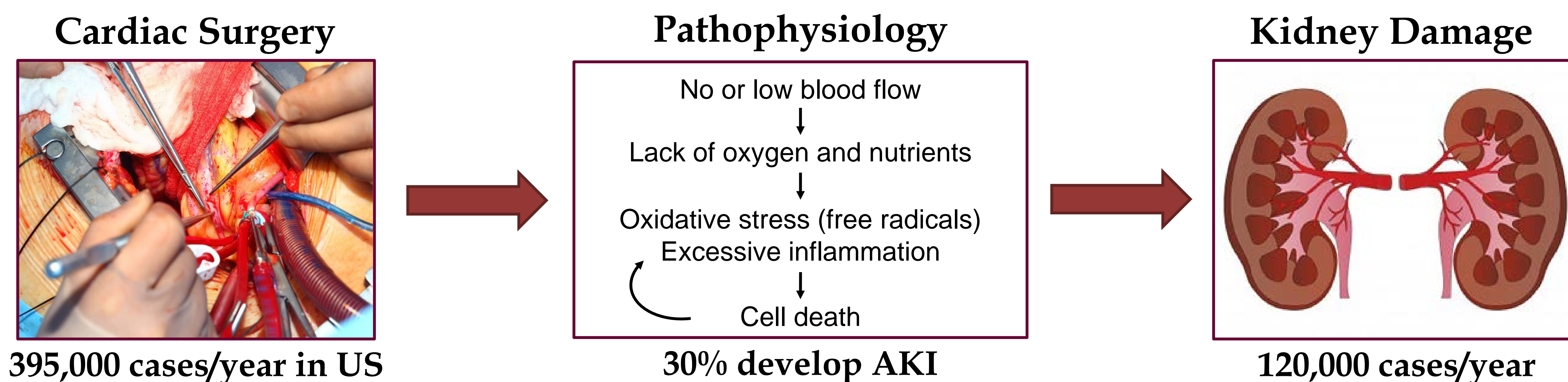


rhMFG-E8 is on the way to being a solution for treating acute kidney injury (AKI)

- US market size of AKI was \$1.4 billion in 2014
- No FDA-approved drugs for AKI
- 4 Phase II clinical trials were terminated in 2014
- Only 1 Phase II clinical trial is ongoing

What Causes AKI:

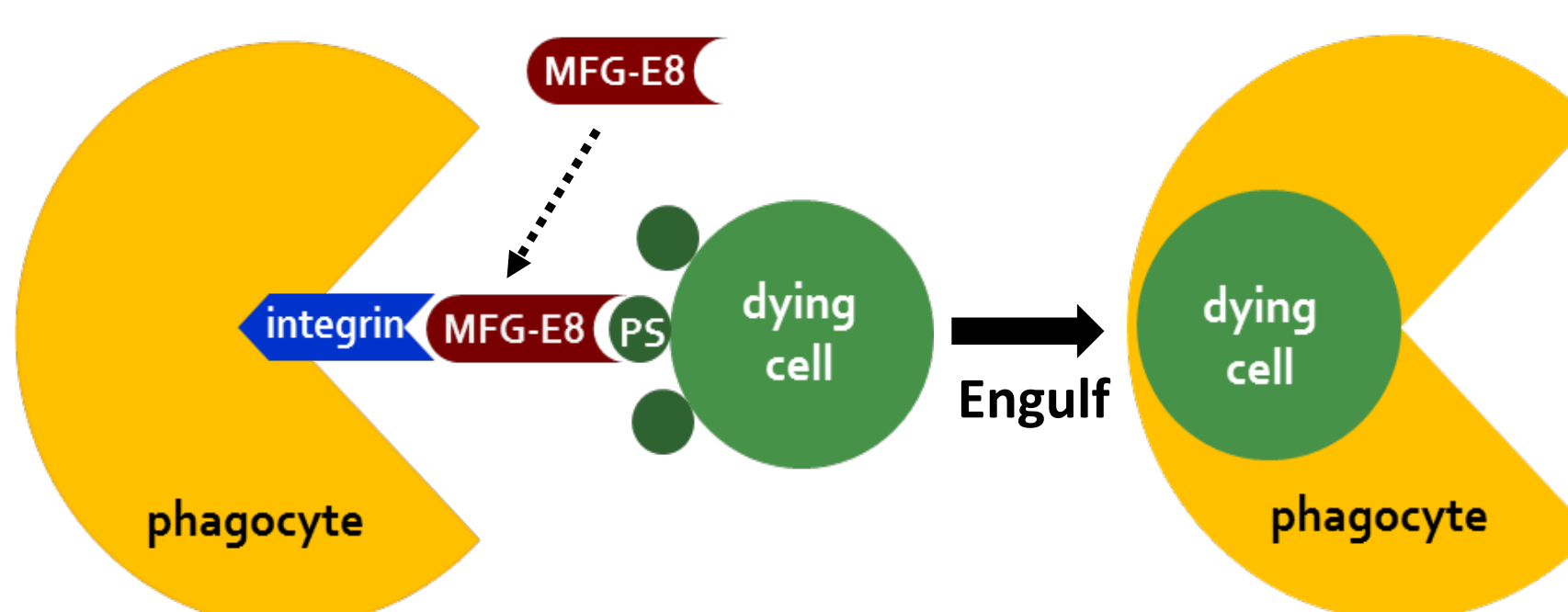


Our Discovery:

MFG-E8: Milk fat globule epidermal growth factor-factor VIII is a secretory protein expressed in human body and abundant in milk.

- Anti-inflammatory activity

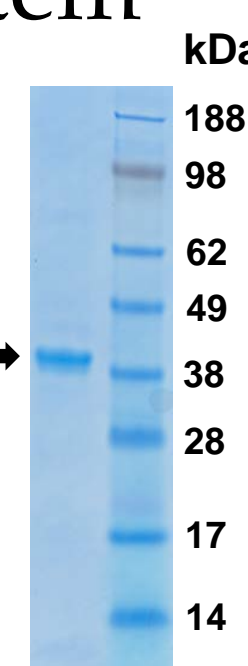
Mechanism: clearing dying cells



Recombinant human (rh)MFG-E8

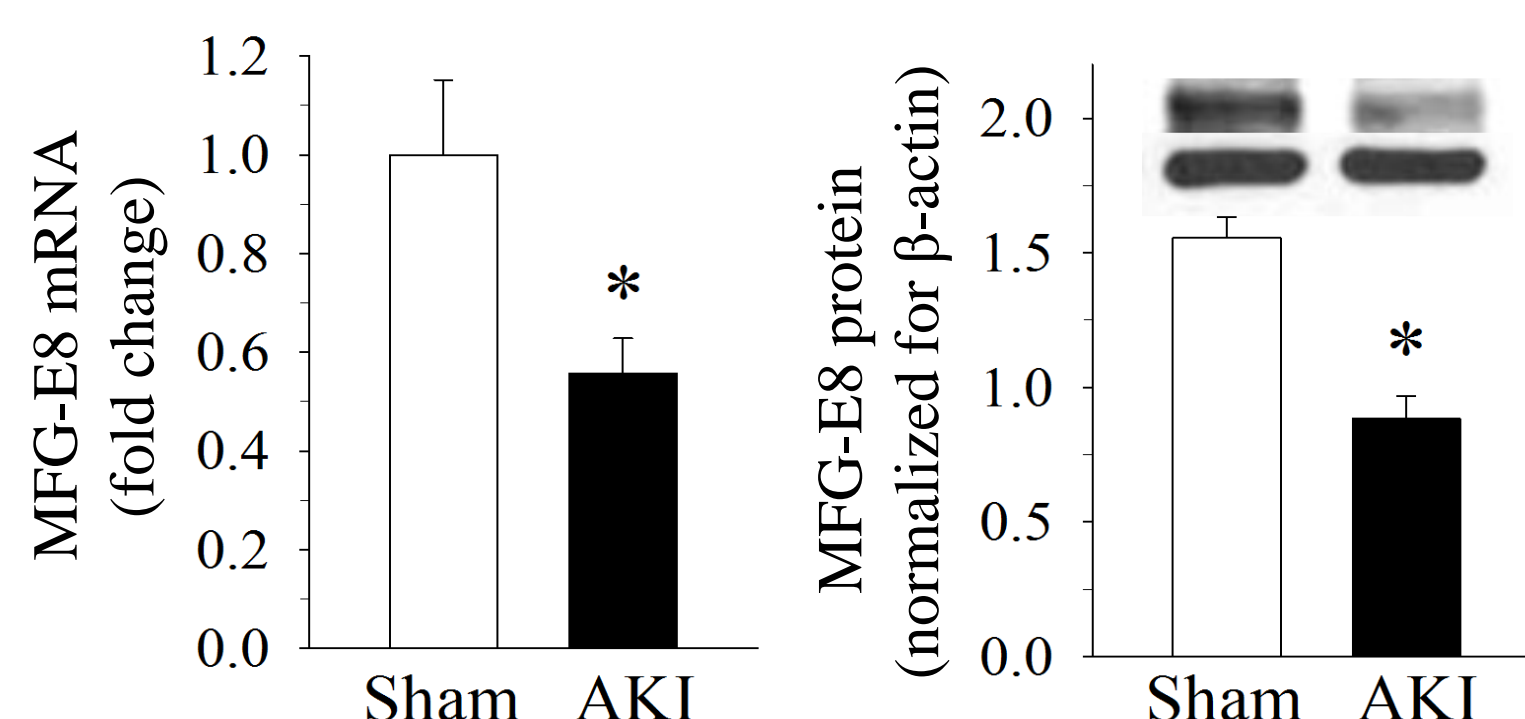
Microbial expression system

- High purity
- High activity
- Stability
- Little to no toxicity
- Long half-life



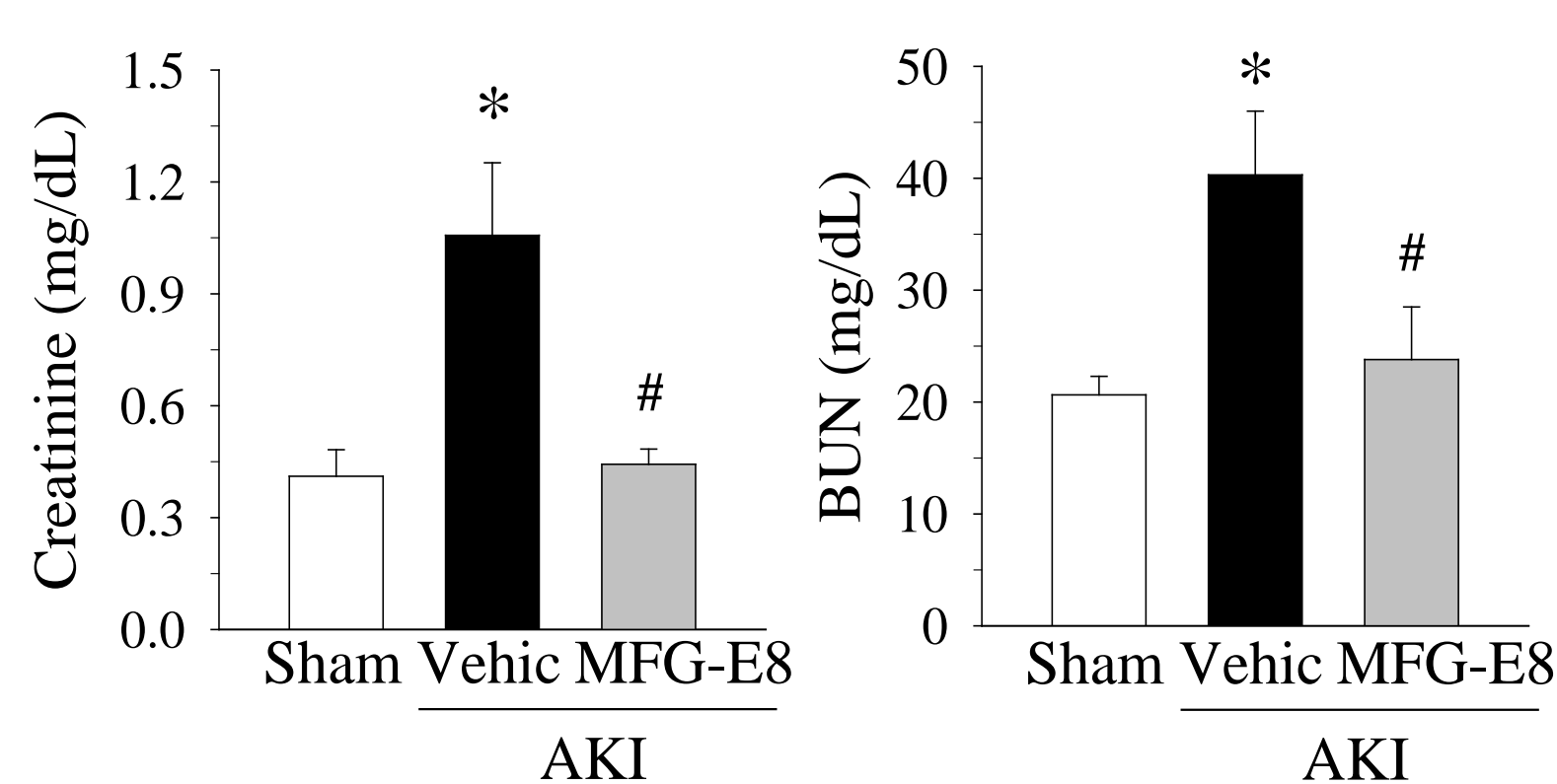
Preclinical Studies:

Renal MFG-E8 is lost in AKI



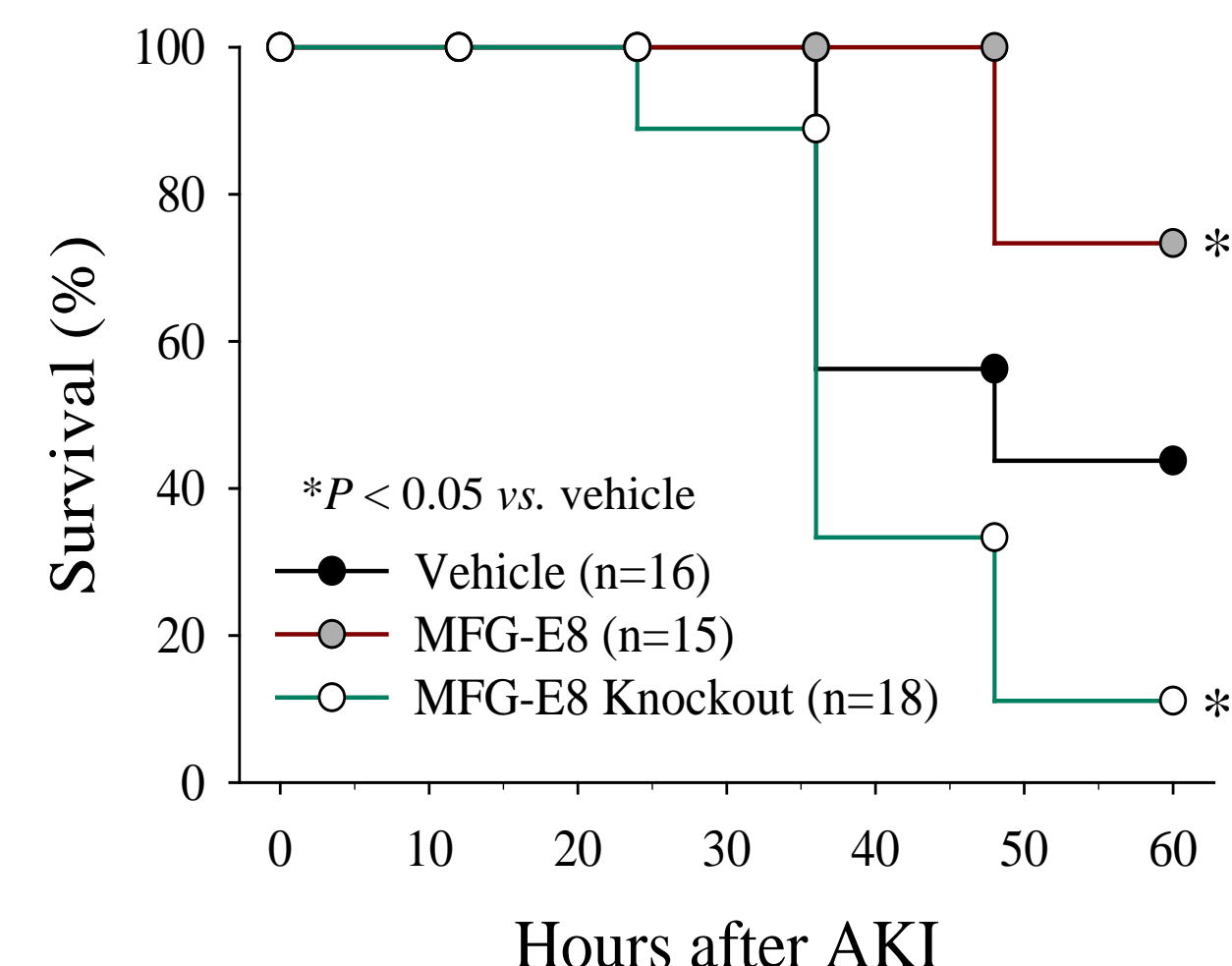
Time at 20 h after AKI induction. Mean ± SEM; n=7-10/group; *P < 0.05 vs. sham.

rhMFG-E8 restores renal function



Time at 20 h after AKI induction. Mean ± SEM; n=7-10/group; *P < 0.05 vs. sham; #P < 0.05 vs. vehicle.

rhMFG-E8 increases survival



IP Protection: US9018157 B2 (issued: US, EP, CN, AU) and US20140121163 A1 (pending)

Looking for Pharma Partnerships and Venture Capital Funding

Contact us: Weng-Lang Yang, CSO TheraSource LLC
 wenglang_yang@therasourceinc.com 350 Community Drive
 therasourceinc.com Manhasset, NY 11030
 Tel: 516-562-2473 www.therasourceinc.com